

Epidemiology of COVID-19 Outbreaks/Clusters in Ireland

Weekly Report

Prepared by HPSC on 5th April 2022

Week 13 2022 (week ending 2nd April 2022)

Note: Data are provisional

This report includes data extracted from CIDR on 5th April 2022 at 8:30am and includes COVID-19 outbreaks notified on CIDR up to midnight 02/04/2022.

Total number of COVID-19 outbreaks notified since Week 10 2020:	23,301
Number of COVID-19 outbreaks notified from Week 26 2021:	5,925
Number of COVID-19 outbreaks notified since Week 26 2021 OPEN:	1,622
Number of COVID-19 outbreaks notified since Week 26 2021 CLOSED:	4,303
Number of COVID-19 outbreaks notified in Week 13 2022:	172

Waves (weeks)	Dates
Wave 1 (Week 10 – 31 2020)	01/03/2020 – 01/08/2020
Wave 2 (Week 32 – 47 2020)	02/08/2020 – 21/11/2020
Wave 3 (Week 48 2020 – Week 25 2021)	22/11/2020 – 26/06/2021
Wave 4 (Week 26 – 50 2021)	27/06/2021 – 18/12/2021
Wave 5 (Week 51 2021 onwards)	19/12/2021 onwards

The HPSC Epidemiology of COVID-19 Data Hub provides data on non-private household outbreaks. The Data Hub is updated Monday to Friday. <https://epi-covid-19-hpscireland.hub.arcgis.com/>

Regional Departments of Public Health are currently prioritising the investigation and reporting of outbreaks in settings that benefit most from public health and clinical intervention. These settings include acute hospitals, nursing homes, community hospital/long-stay units, residential institutions, other healthcare settings, vulnerable populations, special educational needs schools/classes and childcare facilities. For this reason, outbreaks in other settings may be underestimated. This report focuses on these key settings/groups.

In addition, due to the surge in case numbers in recent months, the processing time of case notifications on CIDR has increased. Outbreak cases may not yet be processed and linked to their outbreak on CIDR. Due to these delays, an interim measure has been applied whereby the higher number between aggregate and outbreak linked confirmed case numbers is used in outbreak settings (report pages 8-18).

Note: Data are provisional

HSE-Health Protection Surveillance Centre

Due to the cyber-attack on the HSE IT systems on 14/05/2021, CIDR was unavailable for the reporting of COVID-19 outbreaks from 14/05/2021 to the 28/06/2021. As a result, there has been a delay in reporting for many outbreaks on CIDR. To account for this, outbreak week for all outbreaks created between May 14th and October 9th is based on the following algorithm: earliest of 1. outbreak recognition date; 2. first reported date; 3. outbreak created date. Outbreak week is based on outbreak created date for all outbreaks created on or before May 13th 2021, and on or after October 10th 2021.

Please note COVID-19 outbreaks and cases are continuously validated/updated on Ireland's National Computerised Infectious Disease Reporting System (CIDR).

The COVID-19 outbreak definition is available in appendix 2 of this report and on the HPSC website at: <https://www.hpsc.ie/a-z/respiratory/coronavirus/novelcoronavirus/casedefinitions/covid-19outbreakcasedefinitionforireland/>

Sincere thanks are extended to all those who are participating in the collection of data and reporting of data used in these reports. This includes the HSE COVID-19 Contact Management Programme (CMP), staff in ICU units, notifying clinicians, laboratory staff, public health doctors, nurses, surveillance scientists, microbiologists and administrative staff.

23,301 COVID-19 outbreaks have been reported in Ireland since Week 10, 2020 (Figure 1).

Summary (Week 26 2021 to Week 13 2022)

5,925 COVID-19 outbreaks have been reported from Week 26 2021 onwards (week beginning 27/06/2021; fourth wave of COVID-19 infection in Ireland) and key outbreak locations are as follows:

- 499 (8.4%) were reported in hospitals
- 717 (12.1%) were reported in nursing homes
- 103 (1.7%) were reported in community hospital/long-stay units
- 923 (15.6%) were reported in residential institutions
- 271 (4.6%) were reported in 'other' healthcare services
- 608 (10.3%) were reported in schools[#]
- 254 (4.3%) were reported in childcare facilities
- 2,550 (43.0%) were reported in a range of other settings

4,303 outbreaks have been closed and 1,622 outbreaks are open (See Appendix 1, Table A for breakdown of outbreaks by location and outbreak status. Note that it is common practice not to close private house outbreaks on CIDR due to the large volume of outbreaks in this category).

#In Week 44 2021, 32 outbreaks associated with schools that occurred during May and June 2021 (2020/2021 academic year) were retrospectively notified.

Wave 5 (Week 51 2021 – Week 13 2022)

1,977 of the 5,925 COVID-19 outbreaks reported from Week 26 2021 occurred since the beginning of wave 5 (week beginning 19/12/2021). Of these, 307 (15.5%) were reported in hospitals, 552 (27.9%) were reported in nursing homes, 66 (3.3%) were reported in community hospital/long-stay units and 610 (30.9%) were reported in residential institutions.

Summary (Week 13, 2022)

In **Week 13** 2022, there were **172** COVID-19 outbreaks notified:

- The overall number of outbreaks notified in Week 13 2022 decreased by 26 compared to Week 12* 2022
- In healthcare settings there were:
 - 25 acute hospital outbreaks notified
 - 54 nursing home outbreaks notified
 - seven community hospital/long-stay unit outbreak notified
 - 60 residential institution outbreaks notified
 - 18 outbreaks associated with other healthcare services notified
- In educational settings there were:
 - three outbreaks associated with schools
- The remaining five outbreaks were reported in a number of other settings: private houses (n=3, Irish Traveller Community (n=3)); extended family (n=2, Irish Traveller Community (n=1) and Roma Community (n=1))

*reporting may have been affected by the extended bank holiday weekend in week 11. This may have led to a reduction in the notification of outbreaks in week 11 and an increase in Week 12 due to delayed notification of outbreaks detected during week 11.

Note: Data are provisional

HSE-Health Protection Surveillance Centre

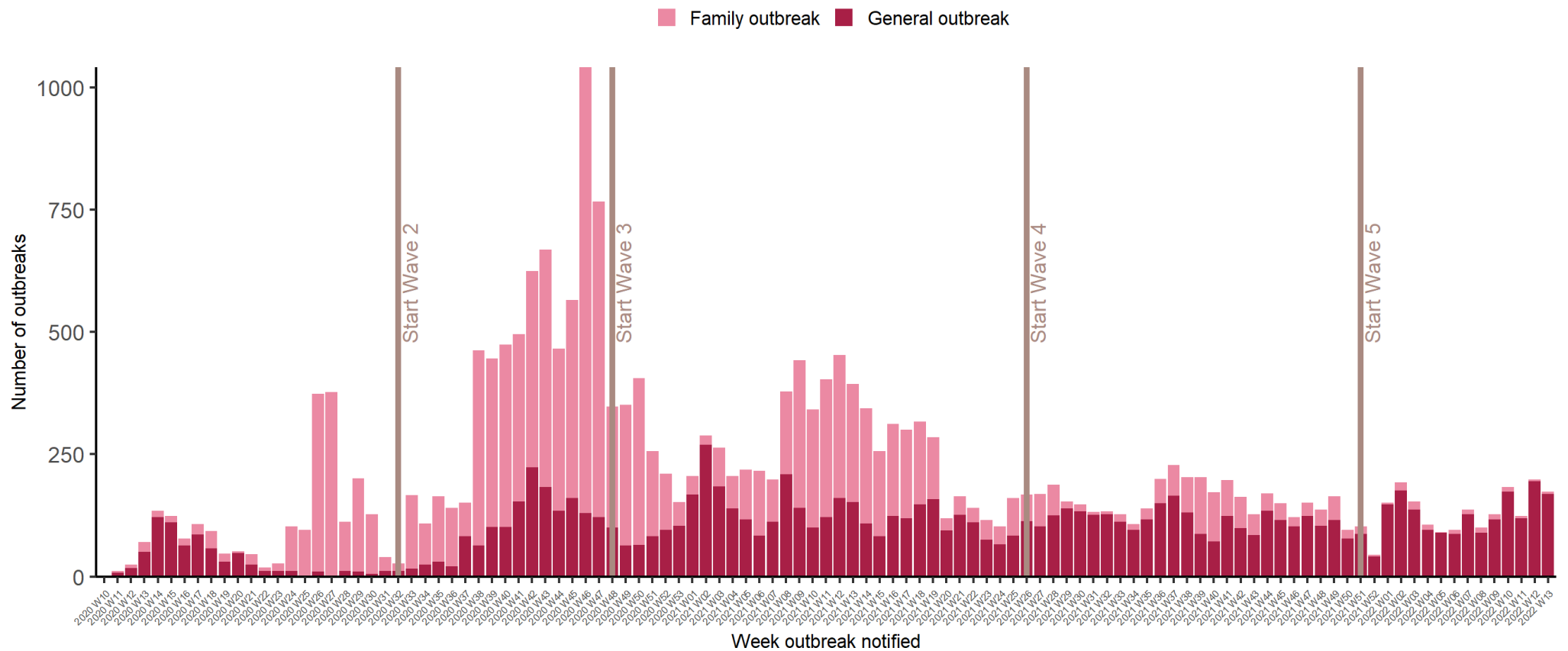


Figure 1: Epi-curve of COVID-19 outbreaks in all settings notified in Ireland by week of notification and outbreak type (see technical note 5, Appendix 2) to midnight on 02/04/2022, N=23,301. *Data source: CIDR*

Vertical lines indicate the timeline of epidemic waves of COVID-19 infection in Ireland. Second wave of infection commenced in Week 32 2020 (week beginning 02/08/2020); the third wave commenced in Week 48 2020 (week beginning 22/11/2020); the fourth wave commenced Week 26 2021 (week beginning 27/06/2021); the fifth wave commenced Week 51 2021 (week beginning 19/12/2021).

Note: Data are provisional

Table 1: Number of COVID-19 outbreaks notified in Ireland by outbreak location and by week of notification from 27/06/2021 to midnight on 02/04/2022, and difference in number of outbreaks notified in Week 13 2022 compared to the previous week, N=5,925. *Data source: CIDR*

Outbreak location	Week of Outbreak Notification									Difference in number of outbreaks notified since last week	Total Wave 4 and 5 (Week 26 2021 - Week 13 2022)
	2022										
	Week 26 2021 to Week 5 2022	6	7	8	9	10	11**	12**	13		
Hospital	319	14	22	13	28	30	15	33	25	-8	499
Nursing home	390	21	40	31	37	48	36	60	54	-6	717
Community Hospital / Long-stay unit	62	3	4	4	5	6	5	7	7	0	103
Residential institution	557	28	38	30	34	54	43	79	60	-19	923
Other healthcare services	177	5	8	7	11	16	15	14	18	+4	271
School total**\$	560	9	13	2	0	15	6	0	3	+3	608
Special educational needs	132	8	10	1	0	15	5	0	3	+3	174
Other school type	428	1	3	1	0	0	1	0	0	0	434
Childcare Facility	251	0	1	1	0	1	0	0	0	0	254
Other locations	2472	15	11	12	13	13	4	5	5	0	2550
Total	4788	95	137	100	128	183	124	198	172	-26	5925

*These outbreaks are outbreaks associated with school children +/- or school staff. Transmission of COVID-19 within the school has not necessarily been established in these outbreaks. #In Week 44 2021, 32 outbreaks associated with schools that occurred during May and June 2021 (2020/21 academic year) were retrospectively notified. Outbreaks in settings in grey may be underestimated due to public health focus on key settings at present. \$Please note not all school outbreaks require public health prioritisation and therefore may not be reported to CIDR. **Reporting may have been affected by the extended bank holiday weekend in week 11. This may have led to a reduction in the notification of outbreaks in week 11 and an increase in Week 12 due to delayed notification of outbreaks detected during week 11.

Note: Data are provisional

Table 2A: Number of COVID-19 outbreaks by outbreak location and HSE-Area notified in Ireland from 27/06/2021 to midnight on 02/04/2022 N=5,925. *Data source: CIDR*

Outbreak Location	East	Midlands	MidWest	NorthEast	NorthWest	SouthEast	South	West	HPSC#	Total
Hospital	209	19	38	61	57	27	37	51	0	499
Nursing home	227	47	78	67	36	78	92	92	0	717
Community Hospital/Long-stay unit	15	2	8	2	21	15	29	11	0	103
Residential institution	282	52	115	132	78	105	105	54	0	923
Other healthcare service	33	3	58	34	15	34	55	39	0	271
School total***	162	59	129	66	73	24	55	40	0	608
Special educational needs	60	13	35	14	10	8	29	5	0	174
Other school type	102	46	94	52	63	16	26	35	0	434
Childcare facility	83	22	30	46	20	11	13	29	0	254
Other locations	342	249	356	253	654	149	311	235	1	2550
Total	1353	453	812	661	954	443	697	551	1	5925

Table 2B: Number of COVID-19 outbreaks by outbreak location and HSE-Area notified in Ireland during Week 13 2022 (week ending 02/04/2022), N=172. *Data source: CIDR*

Outbreak Location	East	Midlands	MidWest	NorthEast	NorthWest	SouthEast	South	West	Total
Hospital	16	0	1	2	0	0	2	4	25
Nursing home	17	6	4	7	5	7	3	5	54
Community Hospital / Long-stay unit	0	0	2	0	0	0	4	1	7
Residential institution	15	7	7	6	8	8	6	3	60
Other healthcare service	1	0	1	1	0	1	11	3	18
School total*	0	0	0	0	0	0	3	0	3
Special education	0	0	0	0	0	0	3	0	3
Other school type	0	0	0	0	0	0	0	0	0
Childcare facility	0	0	0	0	0	0	0	0	0
Other locations	0	0	0	1	0	0	1	3	5
Total	49	13	15	17	13	16	30	19	172

*These outbreaks are associated with school children +/- or school staff. Transmission of COVID-19 within the school has not necessarily been established in these outbreaks. #Outbreak involves three or more public health regions. ##In Week 44 2021, 32 outbreaks associated with schools that occurred during May and June 2021 (2020/21 academic year) were retrospectively notified. Outbreaks in settings in grey may be underestimated due to public health focus on key settings at present. ⁵Please note not all school outbreaks require public health prioritisation and therefore may not be reported to CIDR.

Note: Data are provisional

COVID-19 Outbreaks/Clusters in Residential Facilities and Hospital settings in Ireland

A summary of COVID-19 outbreaks linked to nursing homes, acute hospitals, community hospital/long-stay units, and other residential institutions is shown in Figure 2 and in the subsequent “Focus” sections, Tables 3-5 and Figures 3-5.

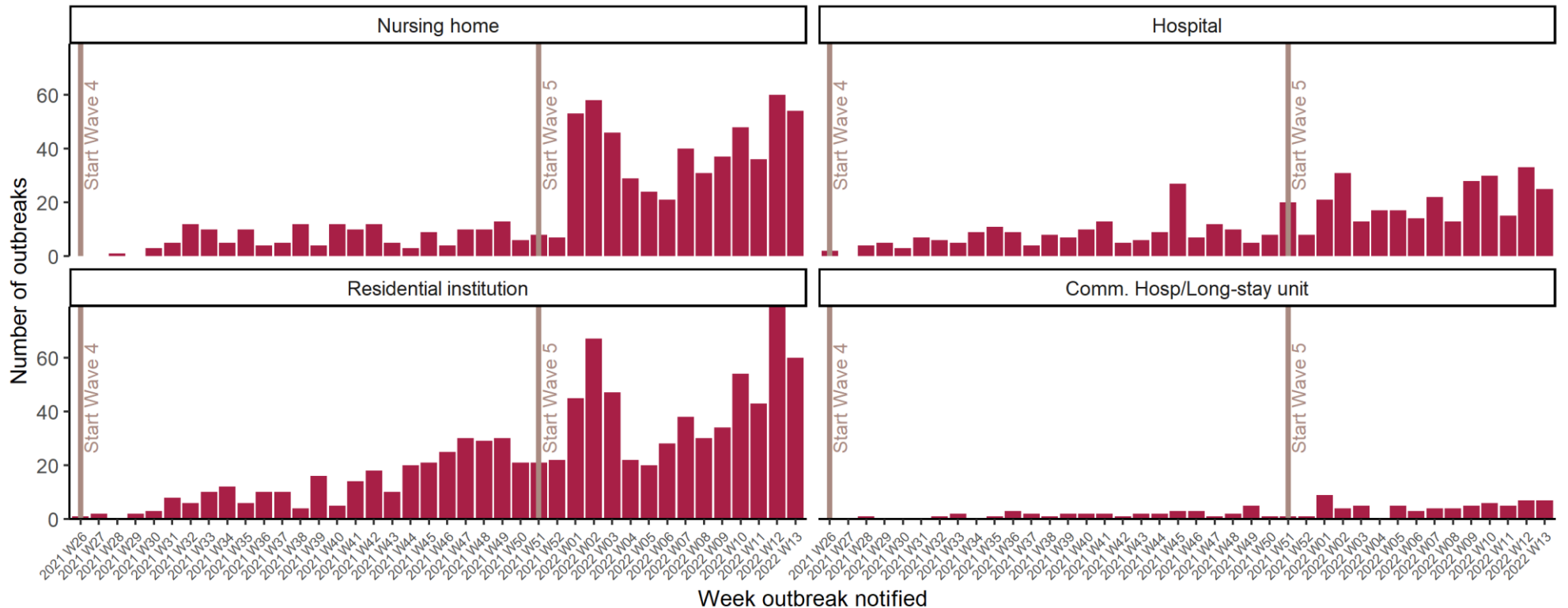


Figure 2: Epi-curve of COVID-19 outbreaks in: Acute Hospitals, Nursing Homes, Community Hospitals/Long-stay units and Residential institutions notified in Ireland by week of notification, from 27/06/2021 to midnight on 02/04/2022. *Data source: CIDR*

Note: Data are provisional

Focus on COVID-19 Outbreaks in Nursing Homes and Community Hospitals

There have been **1,468** COVID-19 outbreaks in nursing homes and community hospital/long stay units, with **30,614** laboratory confirmed COVID-19 cases[§], notified in Ireland since 01/03/2020.

From 27/06/2021 to 02/04/2022, **820** outbreaks in nursing homes or community hospital/long-stay units have been notified and **400** of these outbreaks remain open (Table 3).

There were 54 new COVID-19 outbreaks reported in nursing homes and seven reported in community hospitals during Week 13 2022.

Table 3: Number of COVID-19 outbreaks and laboratory confirmed cases[§] in nursing homes and community hospital/long-stay units in Ireland, from 27/06/2021 to midnight on 02/04/2022. *Data source: CIDR*

Outbreak location	Number of outbreaks notified				
	Week 13	Week 13 outbreaks: Range in no. of cases [#]	Week 26 2021 – Week 13 2022	Number open	Open outbreaks: Range in no. of cases [#]
Nursing home	54	0-58	717	360	0-129
Community Hospital/Long-stay unit	7	0-17	103	40	0-65
Total	61	0-58	820	400	0-129

[#]n/a is used where there were no outbreaks in a category or where there are no confirmed cases currently linked to any outbreak in that category (see technical note 6, Appendix 2). [§]Due to delays in linkage of outbreak cases as a result of the surge, an interim measure has been applied whereby the higher number between aggregate and outbreak linked confirmed case numbers is used.

Note: Data are provisional

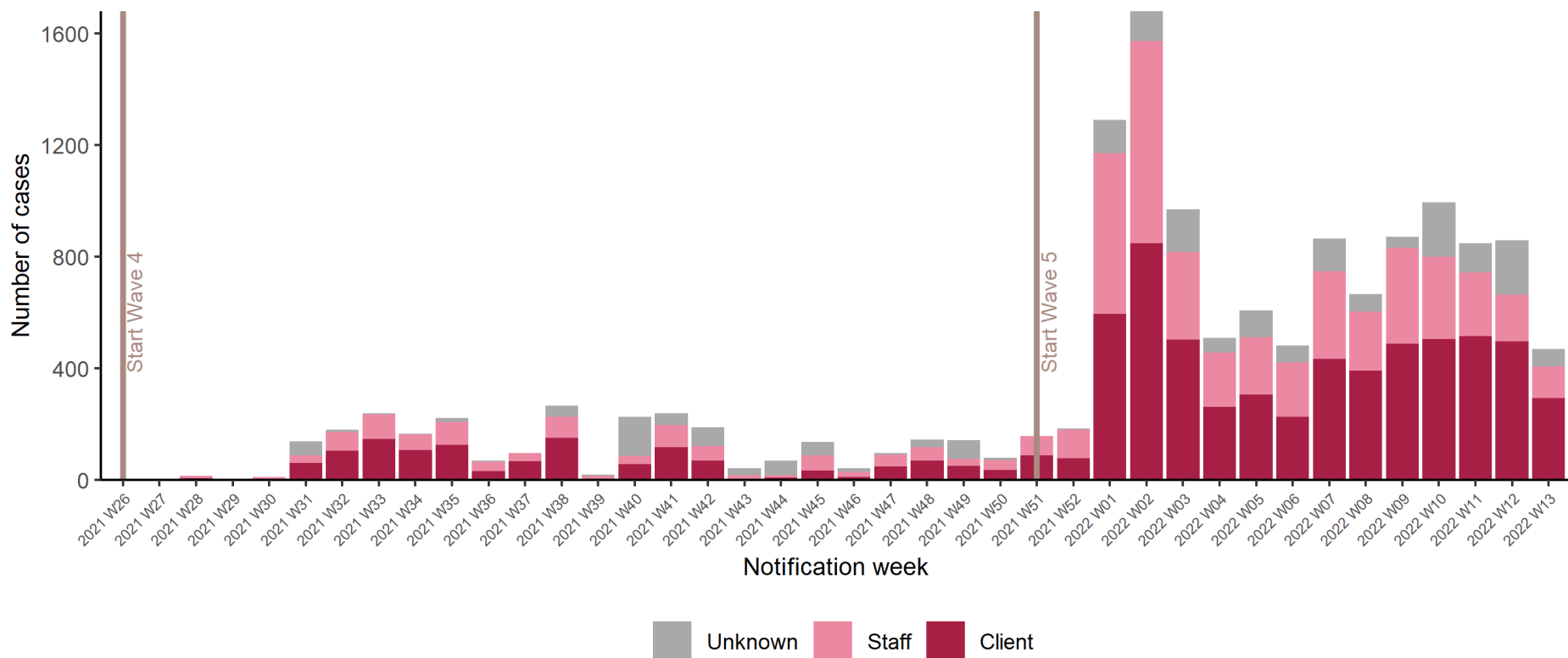


Figure 3: Epi-curve of confirmed COVID-19 cases linked to outbreaks in nursing homes and community hospital/long-stay units by staff/client status and date of notification from 27/06/2021 to midnight on 02/04/2022. *Data source: CIDR*

Note: Data are provisional

Focus on COVID-19 Outbreaks in Acute Hospitals

There were **923** COVID-19 outbreaks in acute hospitals, with **10,481** laboratory confirmed COVID-19 cases⁵, notified in Ireland since 01/03/2020. From 27/06/2021 to 02/04/2022, **499** outbreaks in acute hospitals have been notified and **174** of these outbreaks remain open (Table 4).

There were 25 new COVID-19 outbreaks reported in acute hospitals during Week 13 2022.

Table 4: Number of COVID-19 outbreaks and laboratory confirmed cases⁵ in acute hospital settings in Ireland, from 27/06/2021 to midnight on 02/04/2022. *Data source: CIDR*

Outbreak location: Acute Hospitals	Number of outbreaks notified				
	Week 13	Week 13 outbreaks: Range in no. of cases	Week 26 2021 – Week 13 2022	Number open	Open outbreaks: Range in no. of cases
	25	2-16	499	174	0-92

⁵Due to delays in linkage of outbreak cases as a result of the surge, an interim measure has been applied whereby the higher number between aggregate and outbreak linked confirmed case numbers is used.

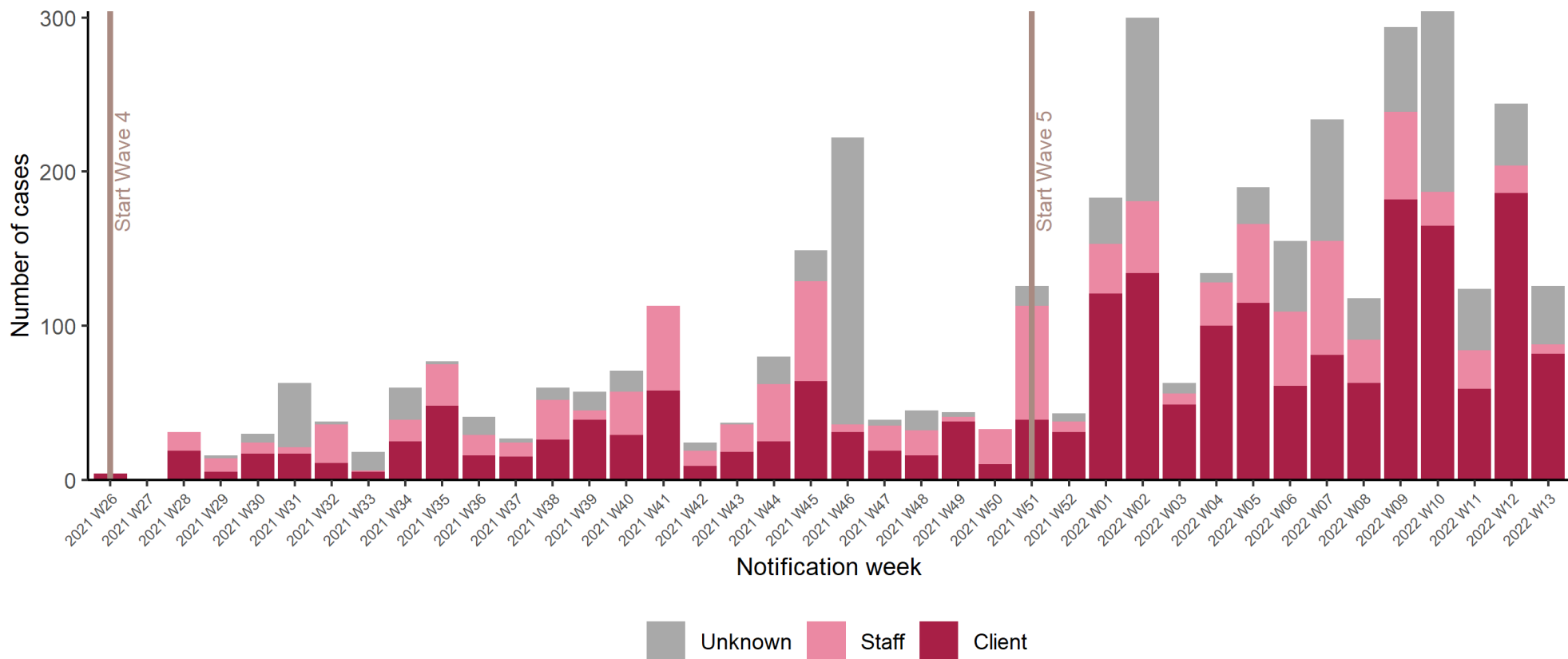


Figure 4: Epi-curve of confirmed COVID-19 cases linked to outbreaks in hospitals by staff/client status and date of notification from 27/06/2021 to midnight on 02/04/2022. *Data source: CIDR*

Note: Data are provisional

Focus on COVID-19 Outbreaks in Residential Institutions (please see footnote¹)

There were **1,244** COVID-19 outbreaks in residential institutions, with **7,408** laboratory confirmed COVID-19 cases[§], notified in Ireland since 01/03/2020. From 27/06/2021 to 02/04/2022, **802** outbreaks in residential institutions have been notified and **317** of these outbreaks remain open.

There were 53 new COVID-19 outbreaks reported in residential institutions in Week 13 2022: 36 in centres for disabilities; seven in mental health facilities; five in centres for older people; three in children’s / TUSLA residential centres and; two in ‘other’ locations.

Table 5: Number of COVID-19 outbreaks and laboratory confirmed cases[§] in residential institutions in Ireland, from 27/06/2021 to midnight on 02/04/2022. *Data source: CIDR*

Outbreak location	Number of outbreaks notified				
	Week 13	Week 13 outbreaks: Range in no. of cases [#]	Week 26 2021 – Week 13 2022	Number open	Open outbreaks: Range in no. of cases [#]
Centre for disabilities	36	0-15	578	226	0-31
Centre for older people	5	0-10	25	13	0-11
Children’s / TUSLA residential centre	3	0-5	68	14	0-6
Mental health facility	7	0-7	86	50	0-43
Women/children’s refuge	0	n/a	9	3	2-6
Other	2	7-7	30	10	0-68
Not Specified	0	n/a	6	1	<5
Total	53	0-15	802	317	0-68

[#]n/a is used where there were no outbreaks in a category or where there are no confirmed cases currently linked to any outbreak in that category (see technical note 6, Appendix 2). [§]Due to delays in linkage of outbreak cases as a result of the surge, an interim measure has been applied whereby the higher number between aggregate and outbreak linked confirmed case numbers is used.

¹ This section focuses on the following residential settings: Centres for disabilities, Centres for older people, Children’s/TUSLA residential centres and mental health facilities. Homeless services, addiction services, direct provision centres and prisons are reported in the Focus on Vulnerable Populations section.

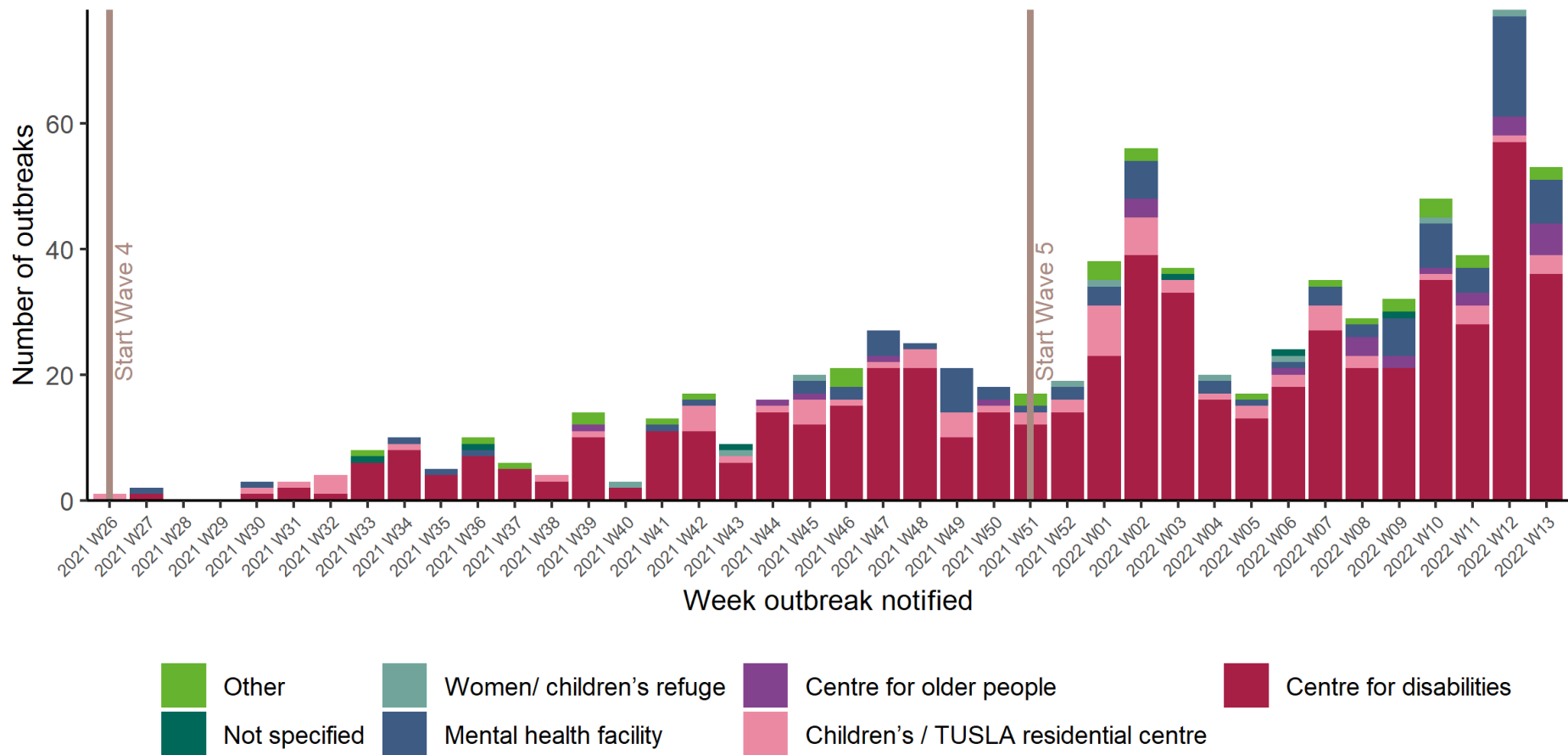


Figure 5: Number of COVID-19 outbreaks in residential institutions by type of residential institution in Ireland, from 27/06/2021 to midnight on 02/04/2022. *Data source: CIDR*

Note: Data are provisional

Focus on COVID-19 Outbreaks associated with Other Healthcare Settings

There were **471** COVID-19 outbreaks associated with other healthcare settings, with **1,894** laboratory confirmed COVID-19 cases[§], notified in Ireland since 01/03/2020.

This brief overview of COVID-19 outbreaks in other healthcare settings notified up to midnight on 02/04/2022 (Table 6). Since Week 26 2021 there have been **271** outbreaks associated with other healthcare services and **103** of these remain open.

There were 18 new COVID-19 outbreaks reported in other healthcare settings in Week 13 2022: nine in services for people with disabilities; five associated with clients of home care services; three associated with clients of mental health services and; one in an ‘other’ healthcare service setting.

Table 6: Number of COVID-19 outbreaks and laboratory confirmed cases[§] associated with other healthcare settings in Ireland, from 27/06/2021 to midnight on 02/04/2022. *Data source: CIDR*

Outbreak location	Number of outbreaks notified				Open outbreaks: Range in no. of cases [#]
	Week 13	Week 13 outbreaks: Range in no. of cases [#]	Week 26 2021 – Week 13 2022	Number open	
Clients of home care services	5	<5	63	20	0-14
People with disabilities	9	1-11	130	60	0-14
Clients of mental health facilities	3	<5	22	8	0-4
All other healthcare service	1	<5	56	15	1-9
Total	18	0-11	271	103	0-14

[#]n/a is used where there were no outbreaks in a category or where there are no confirmed cases currently linked to any outbreak in that category (see technical note 6, Appendix 2). [§]Due to delays in linkage of outbreak cases as a result of the surge, an interim measure has been applied whereby the higher number between aggregate and outbreak linked confirmed case numbers is used.

Note: Data are provisional

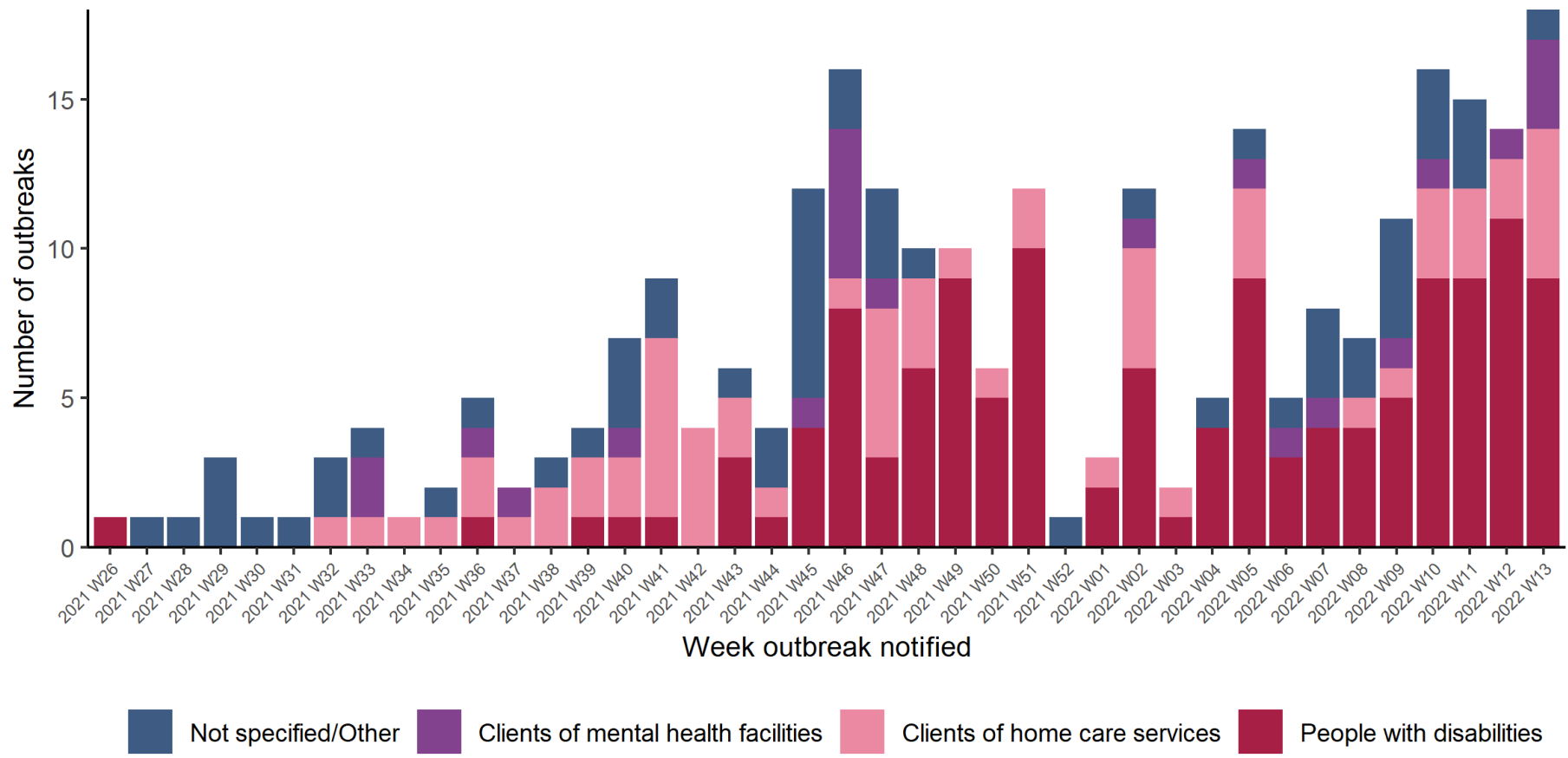


Figure 6: Number of COVID-19 outbreaks in 'Other healthcare' settings by type of setting in Ireland, from 27/06/2021 to midnight on 02/04/2022. *Data source: CIDR*

Note: Data are provisional

Focus on COVID-19 Outbreaks associated Other Vulnerable Populations

There were **1,072** COVID-19 outbreaks associated with the below described vulnerable populations, with **10,445** laboratory confirmed COVID-19 cases⁵, notified in Ireland since 01/03/2020.

This brief overview of COVID-19 outbreaks in vulnerable populations/settings only includes outbreaks involving Irish Travellers, the Roma community, outbreaks in direct provision centres, facilities for the homeless/those with addiction issues and prisons notified up to midnight on 02/04/2022 (Table 7). From 27/06/2021 to 02/04/2022, there have been **471** outbreaks in vulnerable populations, of which **138** remain open.

There were 12 new outbreaks reported in vulnerable populations during Week 13 2022:

- four outbreaks associated with Irish Travellers
- three outbreaks associated with direct provision centres
- three outbreaks associated with the homeless
- one outbreak associated with the Roma community
- one outbreak associated with prisoners/prison staff

Table 7: Number of COVID-19 outbreaks and laboratory confirmed cases⁵ in settings involving vulnerable populations, including the Irish Traveller community, Roma community, direct provision centres, facilities for the homeless/those with addiction issues and prisons notified from 27/06/2021 to midnight on 02/04/2022. *Data source: CIDR*

Vulnerable populations	Number of outbreaks notified				
	Week 13	Week 13 outbreaks: Range in no. of cases [#]	Week 26 2021 – Week 13 2022	Number open	Open outbreaks: Range in no. of cases [#]
Irish Travellers	4	2-5	301	92	0-83
Roma community	1	<5	43	8	2-9
Direct provision centres	3	<5	50	13	0-61
Homeless¥	3	2-7	38	10	1-33
Persons with addictions	0	n/a	16	4	9-22
Prisoners/Prison staff	1	<5	23	11	4-171
Total	12	0-7	471	138	0-171

¥Homeless facilities include some facilities that provide long term supported accommodation. Also includes staff of homeless facilities. [#]n/a is used where there were no outbreaks in a category or where there are no confirmed cases currently linked to any outbreak in that category (see technical note 6, Appendix 2). ⁵Due to delays in linkage of outbreak cases as a result of the surge, an interim measure has been applied whereby the higher number between aggregate and outbreak linked confirmed case numbers is used.

Note: Data are provisional

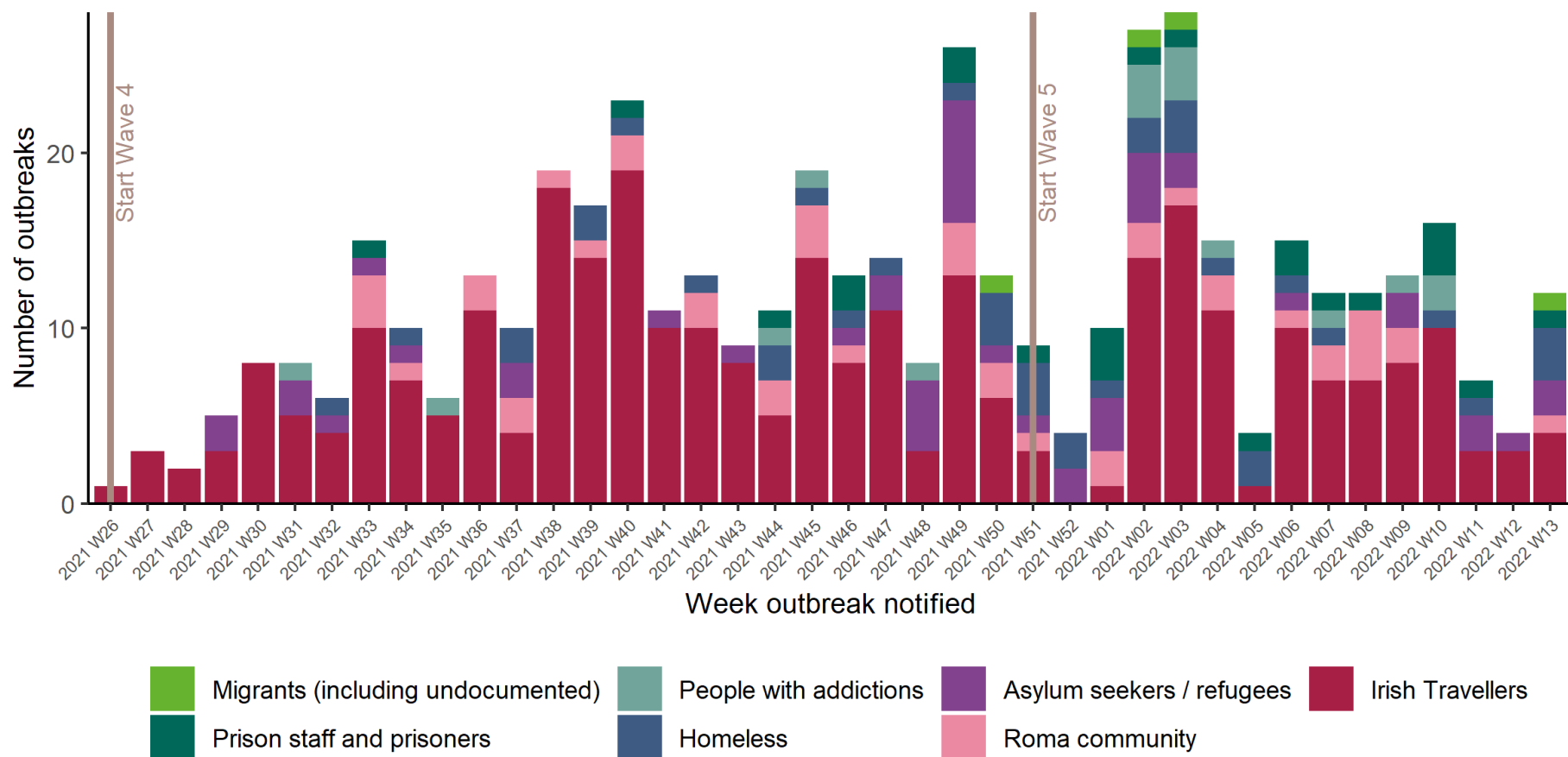


Figure 7: Number of COVID-19 outbreaks associated with other vulnerable populations in Ireland, from 27/06/2021 to midnight on 02/04/2022. Note: to date, all migrant and asylum seeker associated outbreaks linked to direct provision centres. *Data source: CIDR*

Note: Data are provisional

Focus on COVID-19 Outbreaks associated with School Children (+/- staff), and Childcare Facilities

There were **1,387** COVID-19 outbreaks in schools, with **7,195** laboratory confirmed COVID-19 cases[§]; and **651** outbreaks in childcare facilities, with **3,472** laboratory confirmed COVID-19 cases[§], notified in Ireland since 01/03/2020.

In total, **862** COVID-19 outbreaks associated with school children (+/- staff), and childcare facilities have been notified from 27/06/2021 up to midnight on 02/04/2022 (Table 8) and **71** of these outbreaks remain open.

During Week 13 2022, there were three COVID-19 outbreaks notified associated with school children +/- staff

Table 8: Number of COVID-19 outbreaks and laboratory confirmed cases[§] associated with school children (+/- staff) and childcare facilities notified to midnight on 02/04/2022. *Data source: CIDR*

Outbreak location	Number of outbreaks notified				
	Week 13	Week 13 outbreaks: Range in no. of cases [#]	Week 26 2021 – Week 13 2022	Number open	Open outbreaks: Range in no. of cases [#]
Special education	3	<5	174	51	0-14
Other school type	0	n/a	434	4	0-18
Total School*##	3	<5	608	55	0-18
Childcare facility	0	n/a	254	16	0-13
Total	3	<5	862	71	0-18

*These outbreaks are outbreaks associated with school children +/- school staff. Transmission of COVID-19 within the school has not necessarily been established in these outbreaks.

[#]n/a is used where there were no outbreaks in a category or where there are no confirmed cases currently linked to any outbreak in that category (see technical note 6, Appendix 2). ^{##}In Week 44 2021, 32 outbreaks associated with schools that occurred during May and June 2021 (2020/21 academic year) were retrospectively notified. Please note not all school outbreaks require public health prioritisation and therefore may not be reported to CIDR. Therefore, school settings (primary, post-primary) other than special educational needs classes/schools are grouped under 'Other school type'.

[§]Due to delays in linkage of outbreak cases as a result of the surge, an interim measure has been applied whereby the higher number between aggregate and outbreak linked confirmed case numbers is used.

Note: Data are provisional

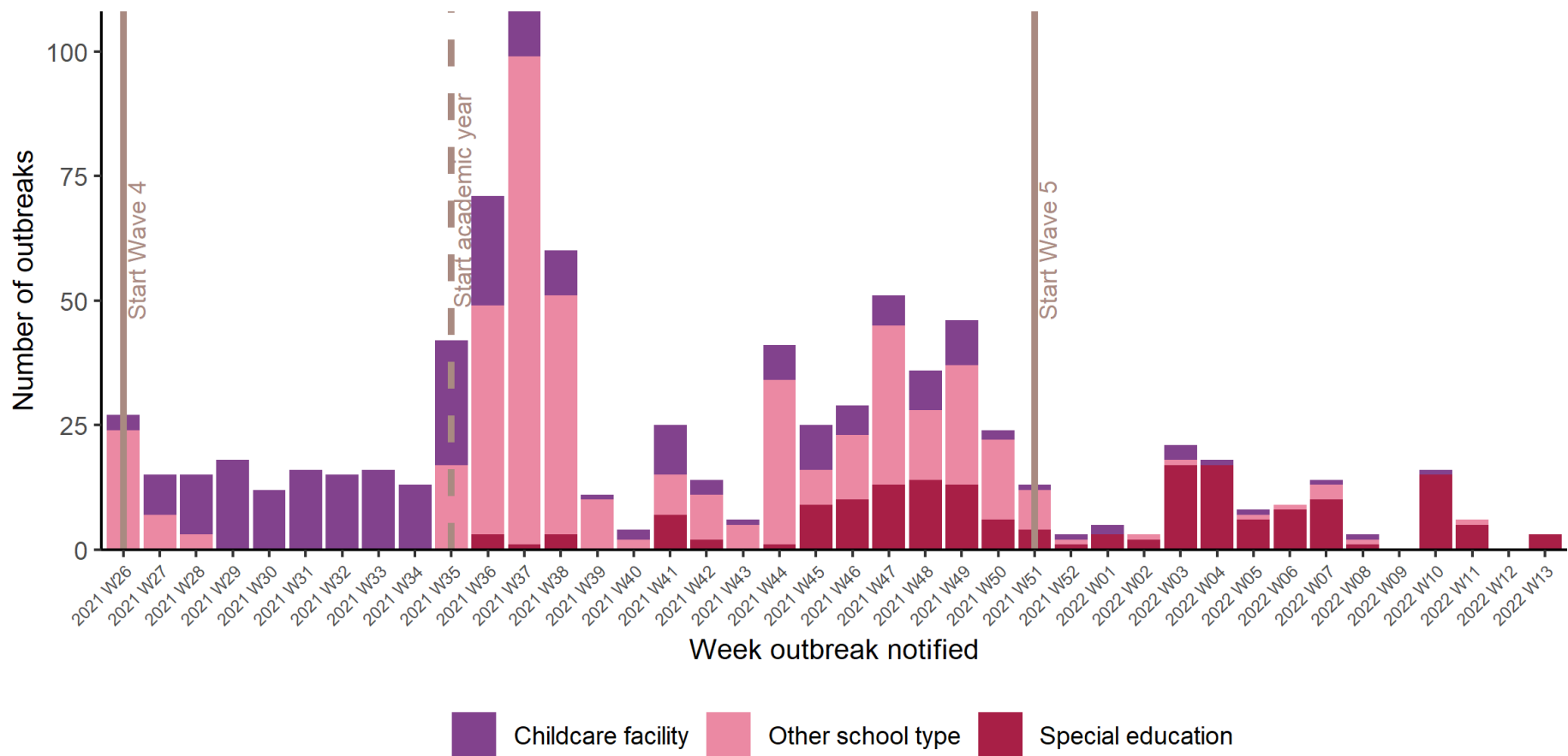


Figure 8: Number of COVID-19 outbreaks in school and childcare facility settings, from 27/06/2021 to midnight on 02/04/2022. *Data source: CIDR*

Note: Data are provisional

Appendices

Appendix 1

Table A: Number of COVID-19 outbreaks notified in Ireland by outbreak location and closure status, to midnight 02/04/2022, N=23,301. *Data source: CIDR*

Outbreak Location	Outbreak closure status (all outbreak classifications)		
	Closed	Open	Total
Hospital	749	174	923
Nursing home	941	360	1301
Community Hospital/Long-stay unit	127	40	167
Residential institution	1186	356	1542
Other healthcare service	368	103	471
School**	1332	55	1387
Childcare facility	635	16	651
University/college***	64	4	68
Workplace	1257	9	1266
Retail outlet	388	2	390
Hotel	111	0	111
Guest house/ B&B	14	0	14
Public house	117	0	117
Restaurant / Cafe	222	1	223
Travel related	259	16	275
Transport	65	2	67
Private house*	6566	5630	12196
Extended family	764	184	948
Community outbreak	527	4	531
Social gathering	281	6	287
Religious/Other ceremony	133	9	142
Sporting activities/fitness	95	0	95
Other recreation activity	29	0	29
Personal grooming service	48	0	48
Other	42	1	43
Unknown	5	0	5
Not specified	4	0	4
Total	16329	6972	23301

*It is common practice not to close private house outbreaks on CIDR due to the large volume of these types of outbreaks on CIDR

**These outbreaks are outbreaks associated with school children +/- school staff. Transmission of COVID-19 within the school has not necessarily been established in these outbreaks.

***These outbreaks are associated with a university/college location and do not include outbreaks among third level students that occurred at other locations

Appendix 2 Technical Notes

1. Data are based on statutory notifications and were extracted from the National Computerised Infectious Disease Reporting (CIDR) system. Data are provisional and subject to ongoing review, validation and update. As a result, figures in this report may differ from previously published figures.

2. For surveillance purposes, the following COVID-19 outbreak definition is used for notifying COVID-19 outbreaks/clusters:

Confirmed*

- **There is a cluster/outbreak, with two or more cases of laboratory confirmed COVID-19 infection regardless of symptom status. This includes cases with symptoms and cases who are asymptomatic.**

OR

- **There is a cluster/outbreak, with two or more cases of illness with symptoms consistent with COVID-19 infection (as per the COVID-19 case definition), and at least one person is a confirmed case of COVID-19.**

* From September 21st 2020, suspected COVID outbreaks should be reported with the disease category 'Acute Respiratory Infection (ARI)'. If one or more cases linked to the outbreak are subsequently confirmed as COVID-19, the ARI outbreak should be reclassified to being a COVID-19 outbreak. Outbreaks of suspected COVID-19 which were notified before September 21st 2020, and met the previous COVID-19 outbreak definition should remain as COVID-19 outbreaks on CIDR.

The COVID-19 case definition is detailed on the Health Protection Surveillance Centre (HPSC) website: <https://www.hpsc.ie/a-z/respiratory/coronavirus/novelcoronavirus/casedefinitions/>

3. This report includes confirmed and suspected COVID-19 outbreaks.

4. An "Open" or "Closed" outbreak is defined as an outbreak where the outbreak status is "Open" or "Closed" on CIDR. In order to declare an outbreak "Closed" the outbreak location should not have experienced any new cases of infection which meet the case definition for a period of 28 days (two incubation periods).

5. Outbreak type (family/general) indicates whether an outbreak is confined to a family (family outbreak) or affects members of more than one household (general outbreak).

6. The "range in number of cases" presented in Tables 3 to 8 is based on laboratory confirmed cases linked to an outbreak in CIDR. The priority is to notify outbreaks to CIDR in a timely fashion and, while every effort is made to link cases to outbreaks as quickly as possible, there can sometimes be a delay in linking cases to the outbreak. Ranges in number of cases that include "0" include outbreaks that currently have no linked cases. Data in CIDR are continuously reviewed and updated and this includes the identification and linking of outbreak-associated cases.